

# SAFETY BULLETIN

Ref Document No.	SB25001	Issue No.	1
Subject	Flameproof receptacle compatibility with PPK Electrics Enclosures		
Release Date	5 <sup>th</sup> August 2025		

## Purpose

To inform owners and users of PPK Electrics (formerly Exlec) enclosures of the potential for non-compliant fitment of restrained receptacles.

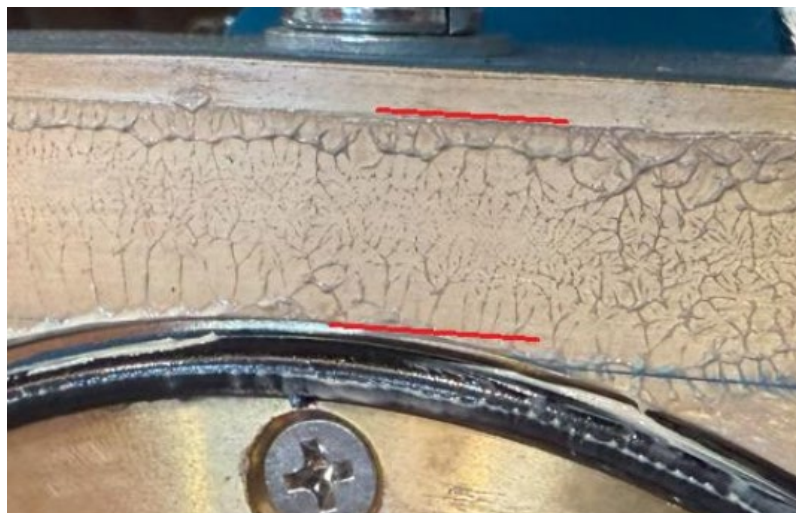
## Applicability

All PPK Electrics enclosures featuring weld-on receptacle mounting pads:

- ANZEx 12.4124X (HA104, HA110, HA118)
- ANZEx 09.4081X (HA111, HA112)
- ANZEx 07.4043X (HA121)

## Background

During overhaul/repair at a third-party Recognised Service Facility, it was identified that the receptacle had a noticeable overlap to the raised receptacle pad. Further investigation revealed that the minimum flame path dimensions of the receptacle certification were not met.



*Figure 1 - Affected joint - minimum flame path length not met*

An illustration of the component fitment is shown in Figures 2 and 3.

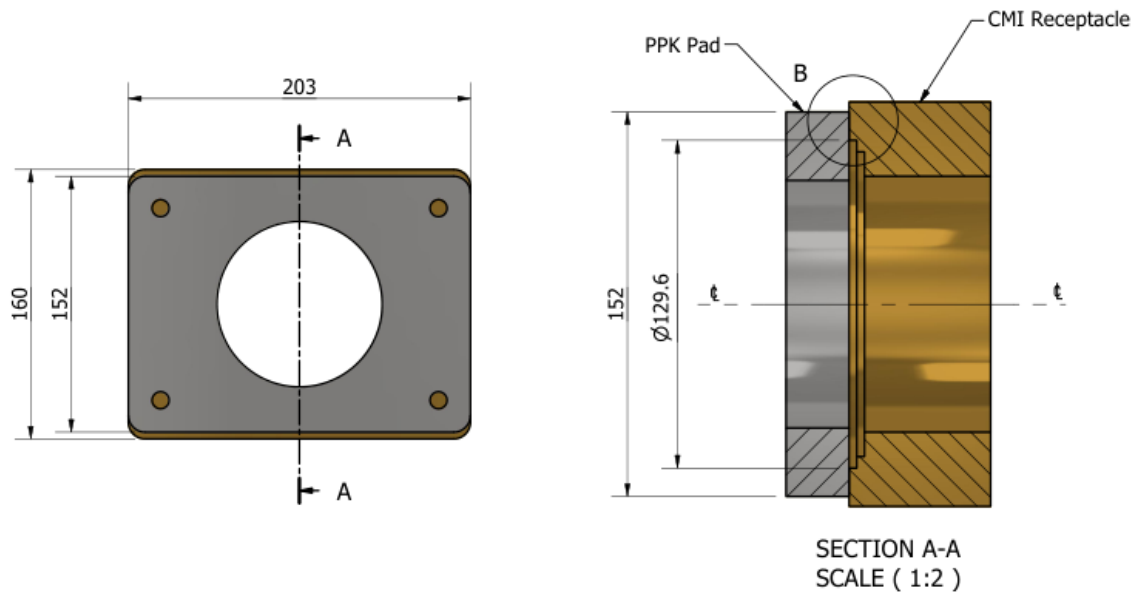


Figure 2 A representation of the mated pair showing nominal dimensions

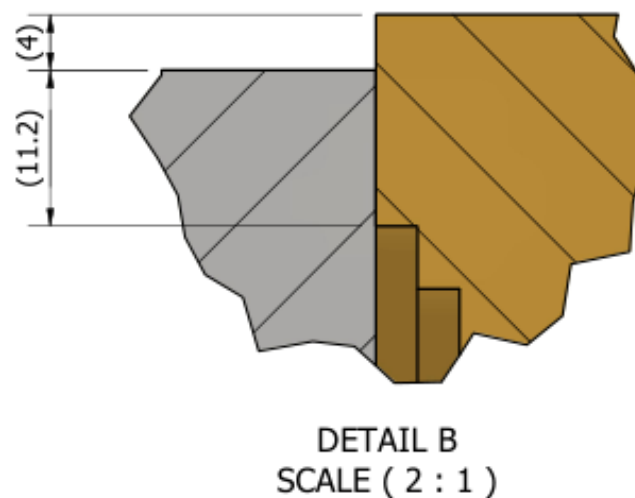


Figure 3 Flame path based on arrangement figure 2.

Note that the representations shown in the figures do not account for manufacturing tolerances, mounting hole clearances, edge treatment of the O-ring recess, etc.

## Investigation /Findings

The following receptacles are known to be incompatible with the current version of the PPK Electrics receptacle mounting plate:

- CMI IECEx ExTC 22.0037X
- CMI IECEx TSA 13.0005X

The receptacle manufacturer has confirmed that:

- The above listed receptacles are fully compliant with AS 1299.
- The manufacturer's recommended mounting templates and flange specifications—as detailed in their receptacle termination documentation—are also fully compliant with AS 1299.

Every effort has been made to identify other receptacles which may be incompatible with the PPK Electrics mounting pad design. However, other receptacle models, especially those which include an O-ring groove, may also be incompatible. The affected mounting plate dimensions are included in the appendix to allow for assessment of existing installations.

## Recommendations and Further Actions

End users and facilities conducting overhauls or inspections should

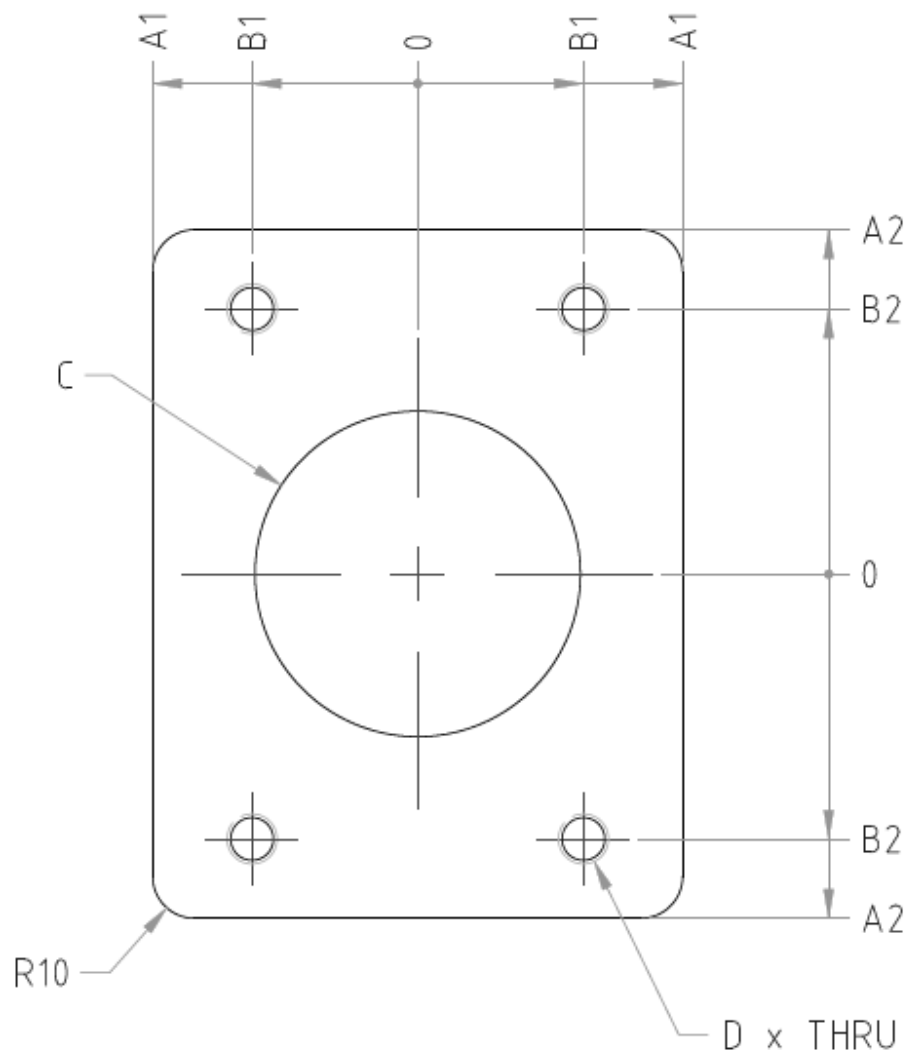
1. Audit affected PPK Electrics enclosures on site to determine if the identified mating issue exists
2. Contact PPKME for support regarding affected enclosures.

PPKME are working on an update to the enclosure certification to increase the mounting pad size to be compatible with larger receptacle footprints.

**Engineering Department**  
PPK Mining Equipment Pty Ltd  
E: [bulletins@ppkme.com.au](mailto:bulletins@ppkme.com.au)  
T: +612 4964 5400  
[www.ppkme.com.au](http://www.ppkme.com.au)

## Appendix

The dimensions of the PPK Electrics receptacle mounting flange:



Part No.	A1	A2	B1	B2	C	D
HA111-001-60	65	65	47.5	47.5	64 $\pm 0.1$	M8 x 1.25-6H
HA111-001-125	55	55	40	40	70 $\pm 0.1$	M10 x 1.5-6H
HA111-001-150	63.5	82.5	39.7	63.5	82 $\pm 0.1$	M12 x 1.75-6H
HA111-001-300	76	101.5	57	82.5	98 $\pm 0.1$	M12 x 1.75-6H